

**THE JUNIPER
LEAP LONG ENGINE
WASH PROBES
JMP/LEAP/D/7185/A&C**

(Supplied as set of two)

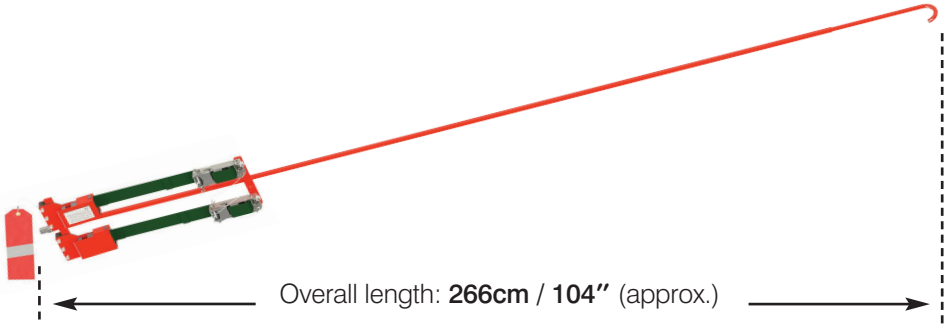
Fitment Guide



AIRCRAFT SERVICE EQUIPMENT



The LEAP long engine wash probes JMP/LEAP/D/7185/A&C



1A&C Engine wash probe clamps

The LEAP long engine wash probes are supplied with a choice of two fixing clamps depending on which engine they are intended to wash. The LEAP 1A and 1C engines both have a straight edge to their nacelles and the fixing clamps on the wash probes have a corresponding flat profile to provide a secure contact.



Flat wash probe clamp profile for use with the 1A and 1C engines



Above: The LEAP 1C, Below: The LEAP 1A



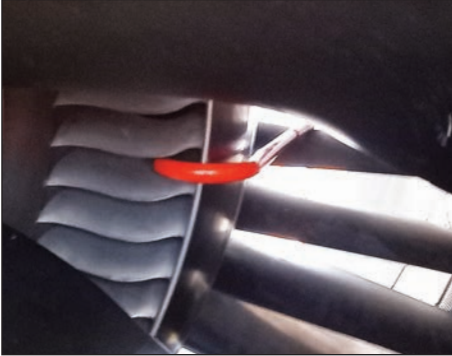
Delivery hose selection



When using LEAP engine wash probes, turn the three way selector to position 'B' this ensures selection of the ½" bore delivery hose.

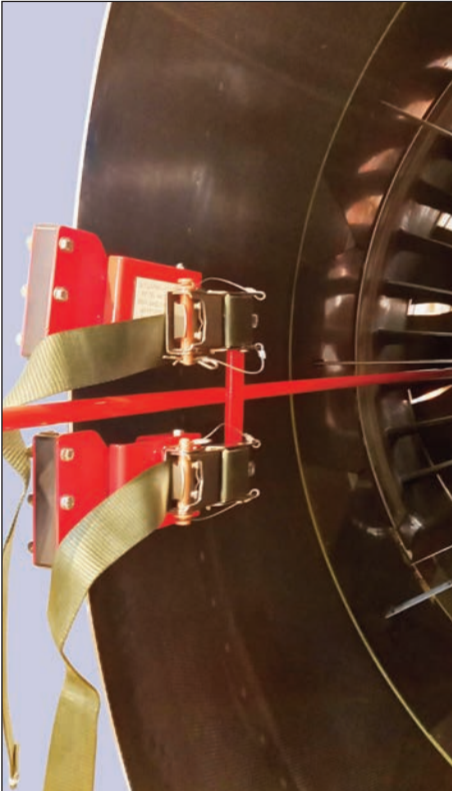
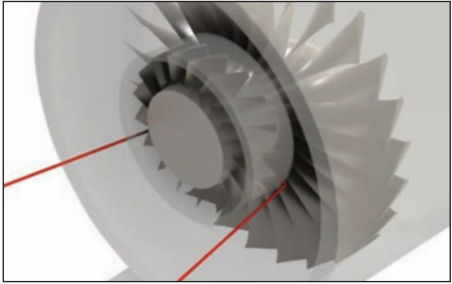
Please refer to the relevant AMM for correct flow rate information.

STEP 1: Fitment to engine



Each probe to be inserted and fitted on the engine at approximately the **3.00 & 9.00 o'clock** positions so that the probe 'j' hook fits over the booster/fan splitter.

Note: Ensure the engine fan is held securely during fitting of the engine 'J' hook probes.



Guide the probes through the fan outlet guide vanes (ogv's) from the aft end, at approximately the **3.00 & 9.00 o'clock** positions, aft looking forward.

Put probes over the booster/fan splitter so that the tips point between the booster inlet guide vanes into the booster and attach clamps. (See *STEP 2 for clamping instructions*).

Connect the twin hose assembly (provided with all compressor wash rigs) to both of the engine probes, making sure that the probes are attached securely to the engine with the hoses attached.

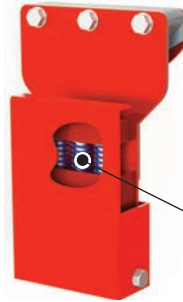
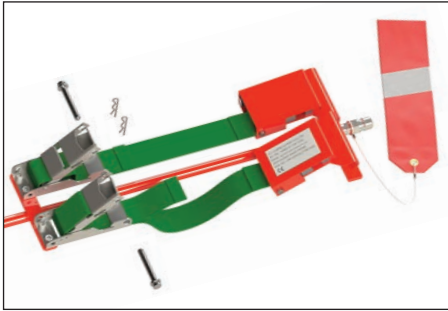
Connect delivery hose from the wash rig to the twin hose assembly.

Note: Images here are for illustrative purposes only and may not accurately represent the engines in question.

Probe installation is now complete.

Please refer to the relevant AMM for flow rate information.

STEP 2: Securing the spring clamps



Spring clamps prevent over-tightening when fitting each probe.

Each probe has two spring loaded clamps which are tensioned by over centre buckle clamping devices.

To release each clamp, remove the safety clip and pin and open each clamp by pushing forward on the releasing mechanism.

This will allow the spring loaded clamp to be removed for relocation on the engine. Once relocated, pull gently on the strap and re-apply over the centre buckle.

Re-fit safety pin and clip - once the probe is inserted and located in the engine.

Connection to rig*



**Shown here are the CF6-80C2 long probes for illustrative purposes only.*

Contact details



Contractors to
H.M. Government Departments
Registered with ISO 9001:2015

A.T.Juniper (Liverpool) Limited Aircraft Service Equipment

Marshall Works
11A Prenton Way,
North Cheshire Trading Estate,
Prenton, Wirral CH43 3DU
England.

Tel: +44 (0)151 733 1553
Email: gse@juniper-liverpool.com
Web: www.juniper-liverpool.com